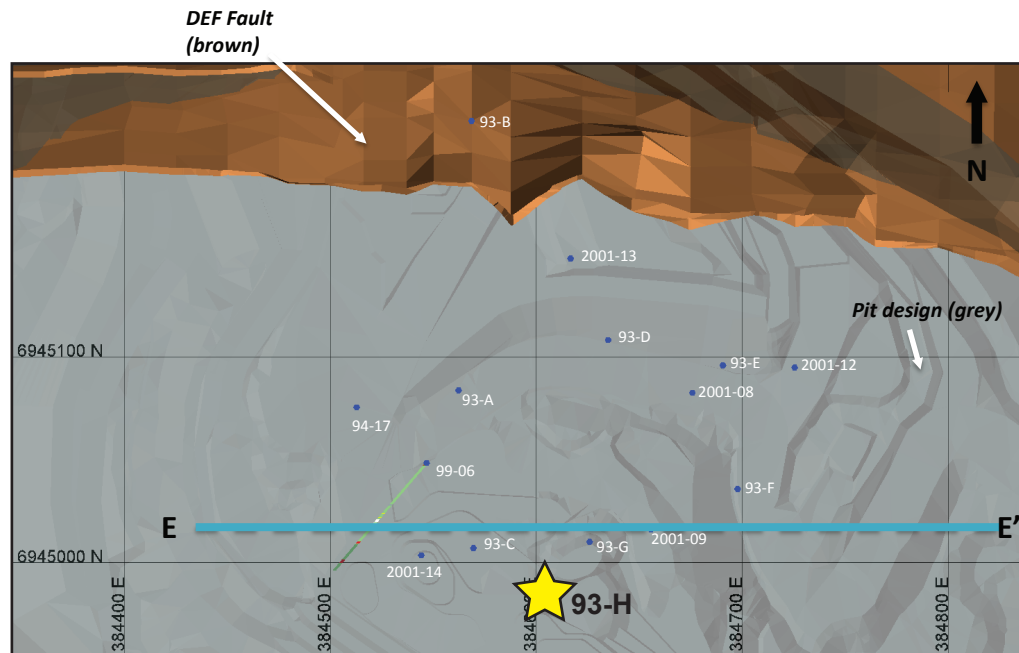


Minto deposit (Yukon MINFILE 115I 021, 022)

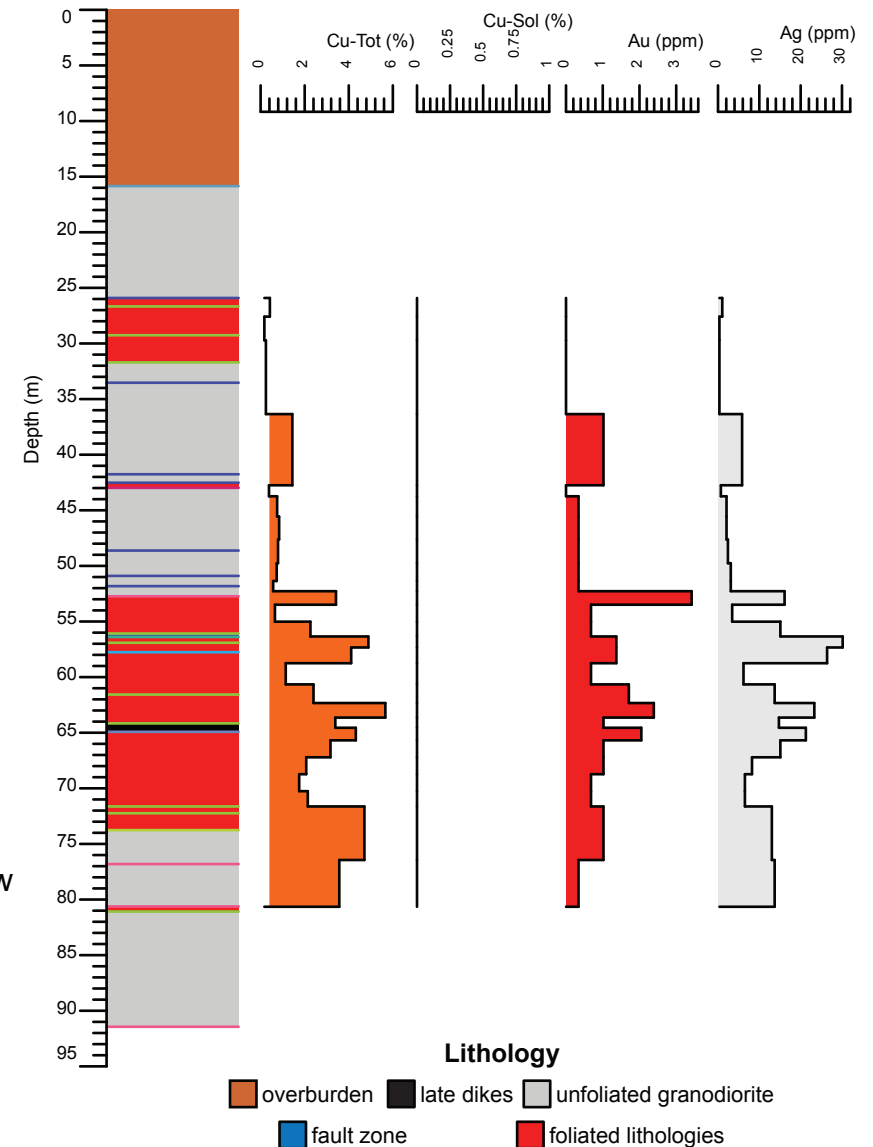
Drill Hole: 93-H, Minto Main deposit

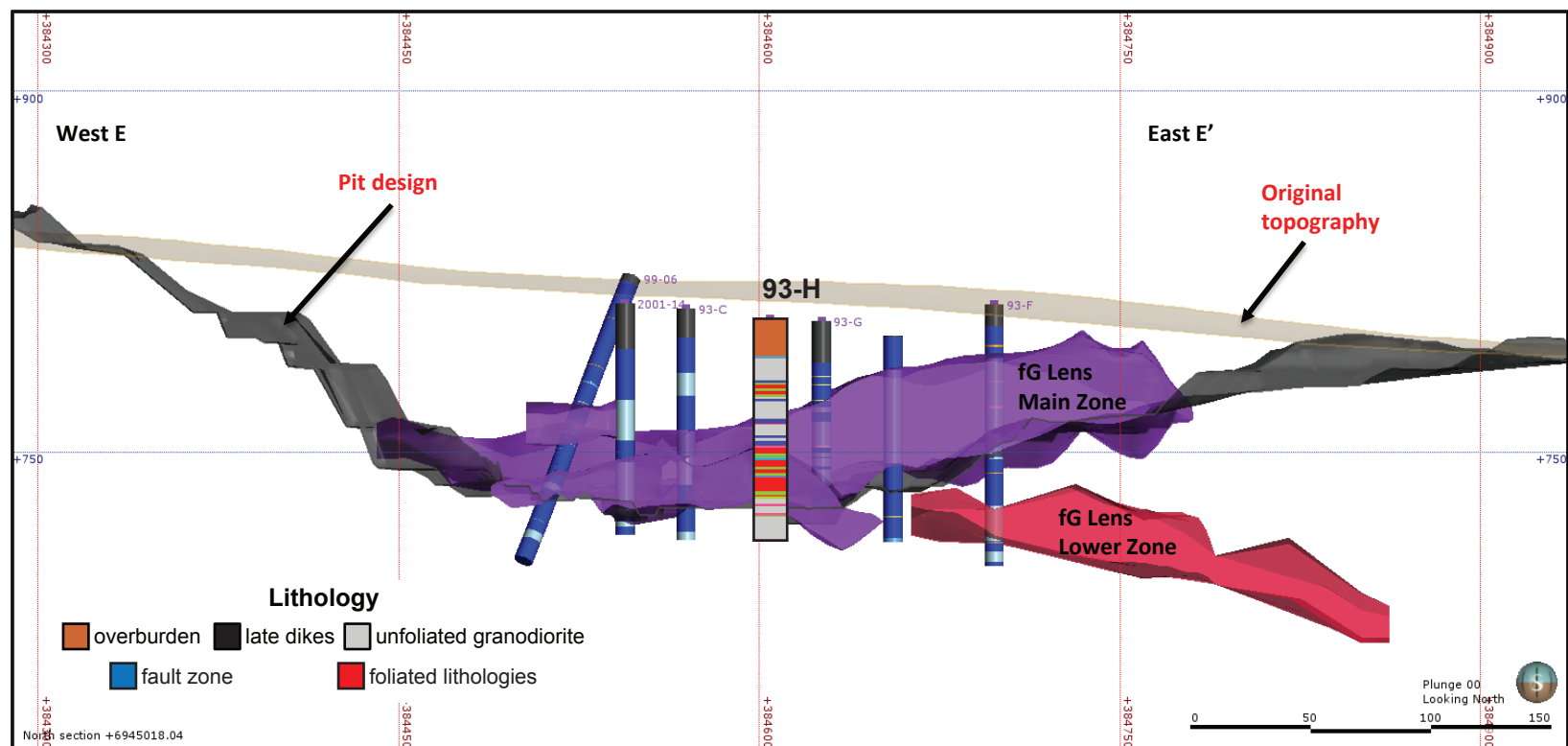
Area	Hole No.	Azimuth	Dip	Length (m)	Collar coordinates (NAD83, Zn 8)
Minto Main	93-H	0	-90	91.44	384604mE, 6944984mN



Above: Orthophoto of Minto area. Collar location of 93-H shown by yellow star, blue circles show collar locations of other drill holes in YGS collection.

Right: Simplified strip log with selected assays.





Above: Simplified vertical east-west cross-section through the Minto Main pit.

Right: Selected assays through Minto Main lower zone. Cu - Tot = sulphide and non-sulphide copper, Cu-Sol = non-sulphide copper

Hole	From (m)	To (m)	Interval (m)	Sample	Cu (%)	Cu-Sol (%)	Au (ppm)	Ag (ppm)
93-H	48.62	50.9	2.28	4604	0.8	0.0	0.3	2.4
93-H	50.9	51.82	0.92	4631	0.7	0.0	0.3	3.1
93-H	51.82	52.73	0.91	4632	0.6	0.0	0.3	3.1
93-H	52.73	54.25	1.52	4633	3.4	0.0	3.4	16.1
93-H	54.25	55.78	1.53	4634	0.7	0.0	0.7	3.4
93-H	55.78	56.91	1.13	4635	2.3	0.0	0.7	15.1
93-H	56.91	57.76	0.85	4636	4.9	0.0	1.4	30.2
93-H	57.76	59.74	1.98	4637	4.1	0.0	1.4	26.4
93-H	59.74	61.57	1.83	4638	1.1	0.0	0.7	6.2
93-H	61.57	63.09	1.52	4639	2.4	0.0	1.7	13.7
93-H	63.09	64.16	1.07	4640	5.7	0.0	2.4	23.3